



应急救援展



医疗器械制造展



国际智慧健康展



CMEF
China International
Medical Equipment Fair



康复及个人健康展



国际养老展



家用医疗展

CMEF

NEW TECH SMART FUTURE

2021 May 13-16 SHANGHAI

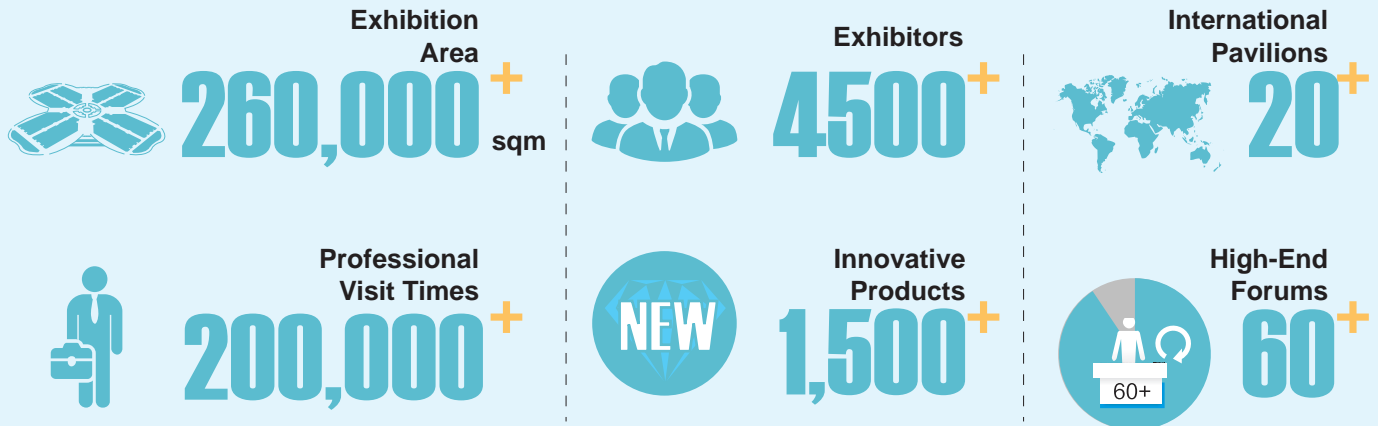
National Exhibition and Convention Center (Shanghai)

INVITATION



Follow us on LinkedIn

www.CMEF.com.cn



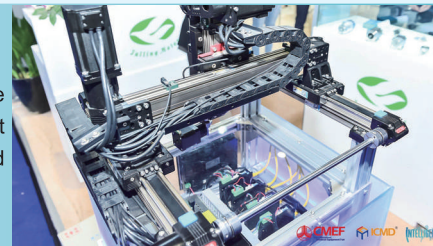
CMEF • 2021

China International Medical Equipment Fair (CMEF), founded in 1979, is a semi - annual event that covers the entire healthcare industry chain. It integrates scientific and technological innovation, new product launches, business matching, brand promotion, academic exchanges, trend insights, education and training. Every CMEF attracts over 7,000 manufacturing enterprises from more than 30 countries and regions, over 600 key opinion leaders (KOLs) and entrepreneurs, as well as 200,000 government officials, hospital, end-users, agents, and distributors from more than 110 countries and regions.



ICMD • 2021

International Component Manufacturing & Design Show (ICMD) is held at the same time as CMEF to facilitate communication between medical device manufacturers and spare parts, service suppliers, showing the latest technologies in medical device manufacturing, promoting interaction in medical device industry chain, and focusing on a new blue ocean of medical device design and manufacturing.



2021 INTELLIGENT HEALTH

国际智慧健康展

International Intelligent Health Expo(IHC) is dedicated to establishing a one-stop integrated platform for advanced intelligent medical corporations for different purposes, at home and abroad, in the launch of intelligent technological products, innovative cooperation, industry clusters, business and trade exchanges, and learning and experiencing. With the development of technology and intelligent manufacturing, the industry will be driven to the mid-to-high end of the technology value chain globally.

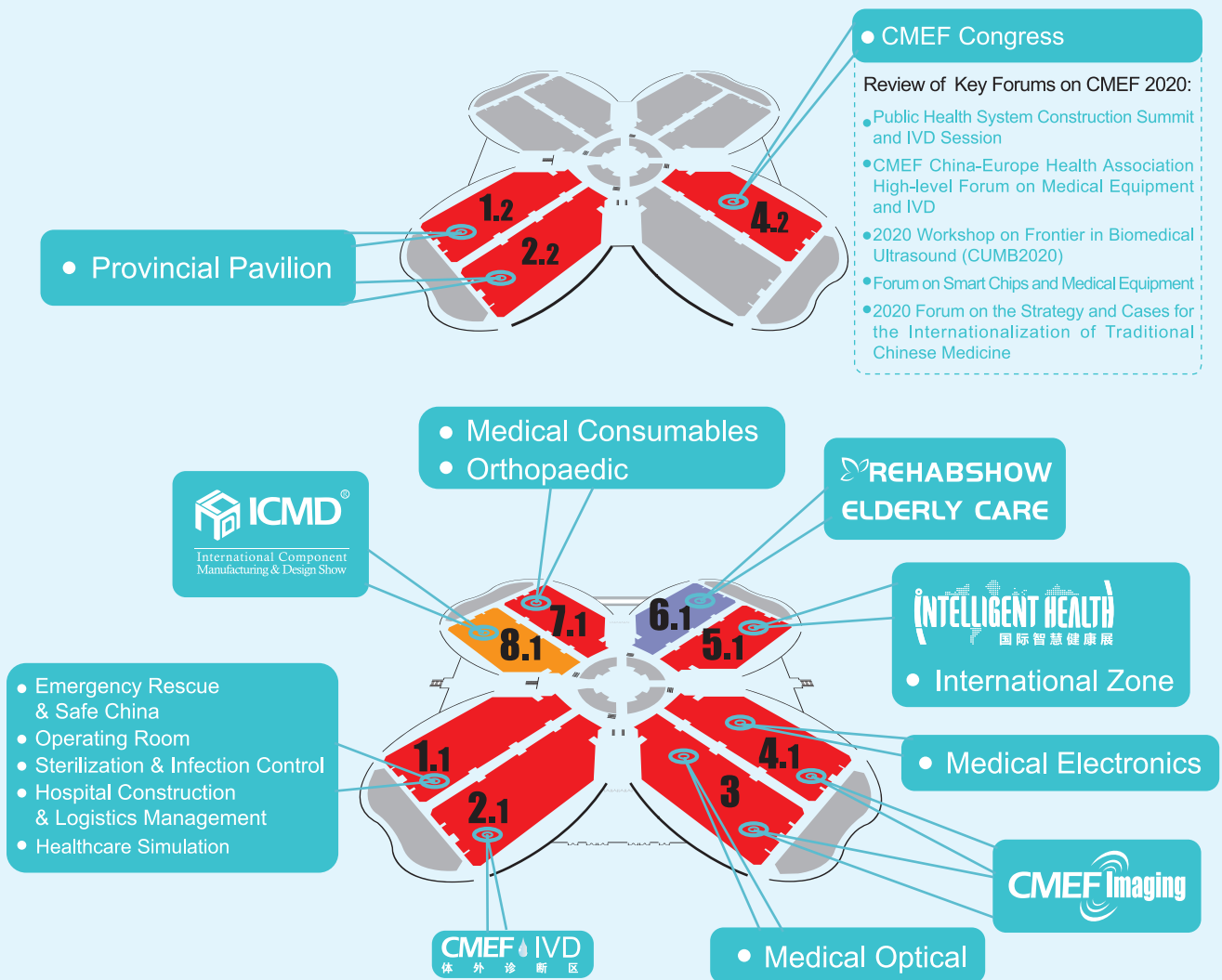


REHABSHOW

As a comprehensive service platform focus on rehabilitation, elderly healthcare and healthy lifestyle, REHABSHOW is committed to provide new technologies, products and applications integrated in the global industrial chain concurrently with CMEF, i.e. rehabilitation and elderly care, assistive devices, nursing and healthcare, health maintenance through traditional Chinese medicine etc.



Layout of **CMEF** Spring 2021





Medical Imaging Hall

Smarter, faster, clearer, safer and more accurate medical images have marked 5G intelligent image era is coming with digital medical solution. On the CMEF 2021, intelligent imaging products and technologies that are deeply integrated with AI, deep learning, big data, 5G Internet will be presented, covering the subdivision of radiation, ultrasound, nuclear medicine, molecular imaging and intervention.



IVD Hall

CMEF 2021 will showcase star testing products in prevention & control of COVID-19. In addition, biochemical immunity, molecular diagnosis, microbiology, blood, chemiluminescence products, overall fever clinic laboratory solution, POCT for molecular diagnosis, and solution of low-temperature cold chain for P3 laboratory will also be gathered.



Operating Room Hall

Integrated operating rooms, digital operating rooms, 5G-based remote operating rooms, operating robots, ventilators, anesthesia machines, operating room/ICU equipment integrated solution, as well as IoT-based first aid equipment, first aid solutions.

Medical Optical Hall

4G/5G-based endoscope solutions, early cancer screening digestive endoscope, COVID-19 screening respiratory endoscope, capsule endoscope, full HD e-endoscope, laser surgery equipment.

Orthopaedic Hall

Products applicable to trauma, spine, joint, and sports medicine.

Medical Consumables Hall

High-value consumables including artificial biological heart valves, pulmonary valvular tubes, valvuloplasty rings, cardiothoracic surgery biological patches, neurosurgical microvascular decompression gaskets; new-generation Co-Cr alloy biodegradable coated drug stents, transcatheter interventional valves, branch aortic covered stents, coronary artery drug-eluting stents, orthopedic implants, drug-eluting balloon catheters, hollow fiber membrane hemodialysis filters, artificial biological tissue patches and anti-epidemic consumable products.

Medical Electronics Hall

Intelligent, networked, information-based intensive care, anesthesia, life support monitoring equipment, including mobile continuous monitor, microwave ablation, minimally invasive treatment, low-temperature plasma, otorhinolaryngology plasma, electric knife, high-frequency surgery system and solution, hemodialysis equipment and consumables.

Hospital Construction and Logistics Management Hall

Hospital beds, medical furniture, ward nursing solutions that meet various needs of hospitals as well as household nursing, rehabilitation institutions, pension institutions; multi-functional nursing vehicles, traditional Chinese medicine appliance, PIVAS, oxygen supply products.

Sterilization & Infection Control Hall

Hundreds of sterilization equipment ranging from microorganism screening to virus killing applicable to hospitals and households; cleaning equipment applicable to households, hospitals, communities, schools, companies including endoscope cleaning workstations, purification engineering equipment, water treatment equipment, infection control indicators and medical disinfection products, overall solution for medical device disinfection center.

Emergency Rescue & Safe China

Household emergency kit*Automatic external defibrillation equipment (AED)* CPR training* Emergency medical equipment*Ambulance & Emergency helicopter*Fire-fighting equipment and fire extinguishing installations*Personal protective equipment*Emergency-Related Services and First aid solutions.

Healthcare Simulation

Simulation teaching such as medical teaching model and standardized patient (SP) instead of real patients is used to facilitate basic clinical skill practice for students. Medical simulation removes obstacles of insufficient clinical teaching resources and improves students' clinical and communication skills. Medical simulation devices including virtual reality training system, physiology driven simulator, computer-based trainer, partial task trainer (PTT), and basic anatomic model will be showcased.

International Hall

As a large-scale international medical device fair in the Asia-Pacific region, CMEF has always been committed to promotion of international exchanges, cross-border trade and multilateral cooperation in different fields of healthcare. Overseas brands from 35+ countries will be present, as well as exhibitor groups from 20+ countries including Germany, the United States, South Korea, Japan, Britain, France, Singapore, Malaysia, Australia, Poland, Turkey, Pakistan and India. At "CMEF Featured National Day", medical institutions and enterprises from different countries display their advanced technologies, products and services, attracting tens of thousands of visitors.



Industrial design, electronic components, intelligent manufacturing chips, modern materials, design, research and development, packaging and printing, fluid control, pneumatic control, battery power supply, transmission control, manufacturing equipment and OEM, optical elements, medical sensors, connectors and OEM components, motors, pumps and motion control parts, product matching services.



AI: medical robot, AI technology, surgical robot, guidance robot

Big data, IoT: cloud platform, information system, regional medical data center, medical big data center (IDC), data analysis system (BI)

Mobile and telemedicine: mobile medical application (app), system operator, remote diagnosis, telemedicine consultation, telemedicine education, telemedicine monitoring system, family doctor management system

Health management: national public health service equipment, health check equipment, all-in-one health machine, health testing equipment

3D printing: 3D printer, in vitro medical devices (medical models, medical devices-such as prosthetics, hearing aids, dental surgery templates), implant 3D printing

Wearable devices: devices monitoring blood pressure, blood sugar, muscle activity, eye movement, skin electrical conduction, sleep, exercise, respiratory system, brain activity, blood oxygen level, heart, body girth, fetal heart monitoring

Fitness and sports equipment: training equipment, functional training, water sports, body condition measurement equipment

VR&AR: VR/AR healthcare project, medical education and training, personalized fitness, psychological disorders, rehabilitation training, visual impairment, clinical assistance equipment, software and systems



Rehabilitation engineering, ICF therapy, household medical care, assistive devices, nursing and care, TCM health, nutrition, household care, elderly-oriented transformation, sleep aids, elderly entertainment products.

Crossing the Boundary of Time and Space

Frontier Academic Exchange

Innovative Technology Showcase

iCMEF

Online Platform for the Global
Healthcare Industry

Insight into Industry Trends

Customized Exhibition Services

Precise Business Matchmaking



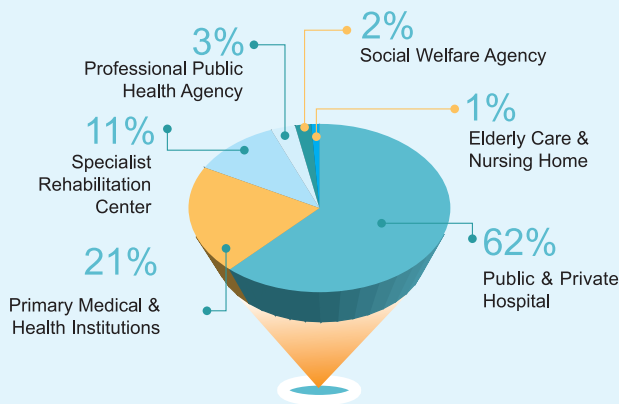
<https://i.cmef.com.cn/homeEn>



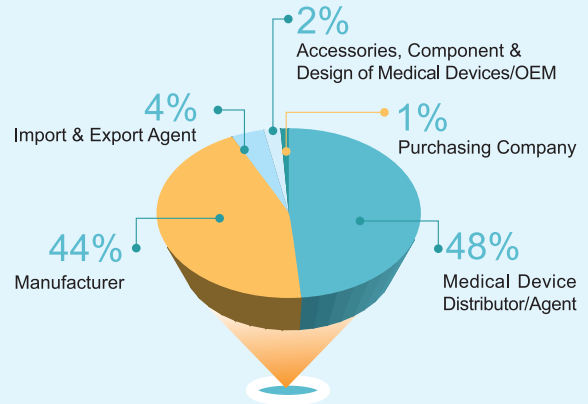
Overview of the CMEF 2020:

111,156 Professional Visitors **4,000+** Exhibitors
1,532+ New Product Releases **60** Academic Forums
 Visitor Satisfaction **97%** Visitor Rate of Return **97.25%**
 Visitor Recommendation **91.29%** **129** Support Media

Visitors From Medical & Health Organization

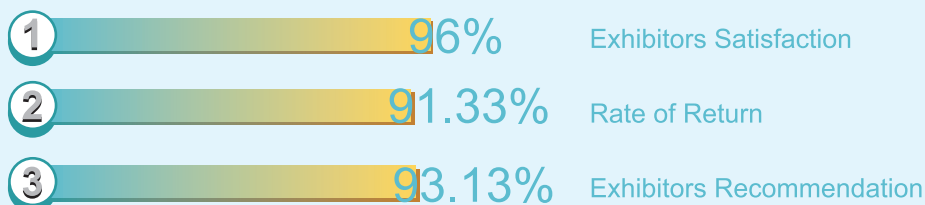


Visitors From Commercial Industry



- CMEF, a world-class integrated medical equipment exhibition, has been chosen by thousands of exhibitors for new product release and brand promotion. Medcongress broaden the horizon of enterprises and visitors by delivering cutting-edge healthcare information.
- CMEF has also gained recognition of major media. CMEF 2019 Spring has attracted 152 media companies, including Dragon TV, People's Daily, Xinhua Net, Global Times, International Finance, Shanghai Daily, Pudong Times, Tencent Video, and MedSci.

Voice of Exhibitors



Our Exhibitors

SHINVA 新华医疗

mindray 迈瑞

UNITED 联影 IMAGING

国药集团 SINOPHARM

yuwell 鱼跃



SIEMENS Healthineers

PHILIPS

康达洲际 KANGDA INTERCONTINENTAL

Neusoft 东软医疗

MinFound 明峰

WEGO 威高

宽腾医疗 Innovation for Life

WDM 万东

Carestream

AS 安科 ANKE

FUJIFILM
清晰诊疗 健康相伴

蓝韵 LANWIND

HOLOGIC
The Power of Data

乐普医疗 LEPU MEDICAL

NIHON KOHDEN

京东

BIOMERIEUX

Snibe
新产业生物

Wondfo 万孚

Sinocare 三诺
• 每测一次都是爱

DIRUI

JUSHA 巨鲨医疗

SIUI 汕头超声

OLYMPUS

OMRON 欧姆龙

翔宇医疗 Xiangyu Medical

翔宇医疗 XIANGYU MEDICAL

SONY

EDAN 理邦仪器

戴维医疗 DAVID

COMEN

力康 Heal Force

白象医疗 BAIXIANG MEDICAL

LAOKEN 老肯医疗

Dräger

Hill-Rom

AEO MED 谊安
产品可靠 服务贴心

winner 稳健医疗

Vanry 万瑞医疗

三鑫医疗 Sanxin Medical

小护士

ROSEFILL

TianSong 浙江天松医疗器械股份有限公司
Zhejiang Tiansong Medical Instrument Co., Ltd.

HD 洪达

Bojin

腾讯医疗健康 Tencent HealthCare

erbe

Keling 科凌

SCHILLER
The Art of Diagnostics

Smith+Nephew

Sinovation 华科精准

AOHUA 澳华内镜

3M

igus

HnG

科思创

Leuze electronic
the sensor people

PAKION MEDICAL

EVONIK
POWER TO CREATE

ARBURG
阿博格

MOONS'
moving in better ways

Booth Booking

Cindy Zhu

International Sales

Tel: 010-84556578

Email: xinyi.zhu@reedsinopharm.com

Leah Li

International Marketing

Tel: 010-84556527

Email: ye.li@reedsinopharm.com